

Business Solution for Packaging Industry



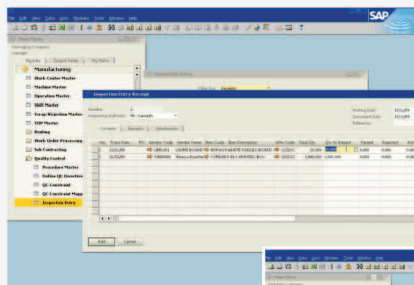
Suitable For:

- Suitable for both make to order and make to stock processes
- Suitable for plastic, metal and paper packaging

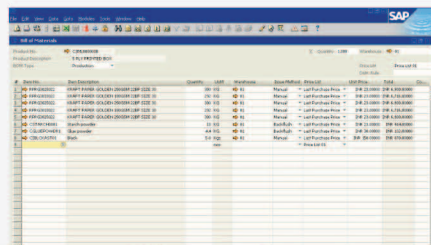
Highlights

- Controls costs and improves manufacturing processes
- Timely quotations through cost estimation
- Helps organize delivery schedules and customize product on demand
- Streamlines plant floor processes
- Accommodates for variations on labels and cartons
- Dynamics document resizing for a variety of package dimensions
- Streamlines Production Line
- Business analytics to evaluate product profitability
- Job Work Management
- Plant Maintenance
- QC for Finished Goods as well as RM
- Various Reports for a quick decision making

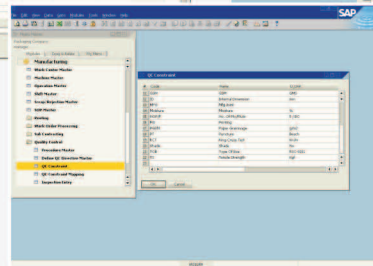
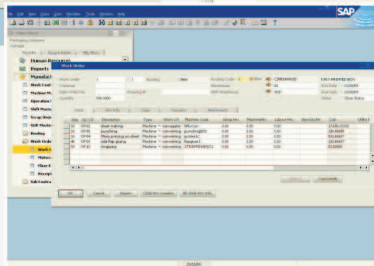
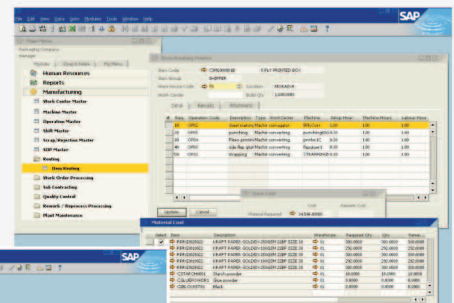
Inspection Entry Receipt



Bill of Materials



Human Resources



Features:

› Work Center Management

- Managed through a Work Centre Master
- Work Centre Code & Description for each WC
- Work Centre Availability for production planning
- Work Centre Cost per hour

› Machine Management

- Managed through a Machine Master
- Machine Code & Name for each machine
- Setup & Resting time for each machine
- Labour and Machine cost per hour setup for each machine
- Machine availability for production planning

› Routing Management

- Operation Codes for Routing or operation sequences
- A unique Routing Sheet for each and every Production item.
- Edition of Routing Sheet possible after release of production order without affecting the original Routing Sheet.
- Multiple Finished Items or By-product can be entered at each sequence and operation level.

› Job Work/ Sub contract Management

- Real time inventory and cost management for sub contracting.
- Conversion Master for goods issued & goods received
- Goods issued to sub contractor and goods receipt from contractor are maintained.

› Operation Code Management

- Operation Master is managed
- Unique Operation Code for each operation
- Appropriate Work Centre assignment for each operation
- Operation type and week days are maintained

› Quality Control Management

- QC at various stages of production on Finished Goods as well as on WIP
- QC on RM for purchase
- Item and item group wise QC rules are setup
- Facility to approve or reject the item.

› Costing for Production

- Production Cost estimation and management
- Direct and Indirect Cost calculation for every production order
- Costing of sub contracting and rework

› WIP Inventory Management

- Inventory status at any stage of WIP
- Cost of inventory at any stage
- Costing of scrapes during WIP to get
- Actual Cost of Production

› Plant & Machine Maintenance

- Machine maintenance schedule & breakdown rectification management
- Knowledge base for repetitive breakdowns
- Spare parts inventory and maintenance
- Machine efficiency calculation according to breakdowns

Solution Powered By :



SilverMFG

* Logo are property of their respective owners